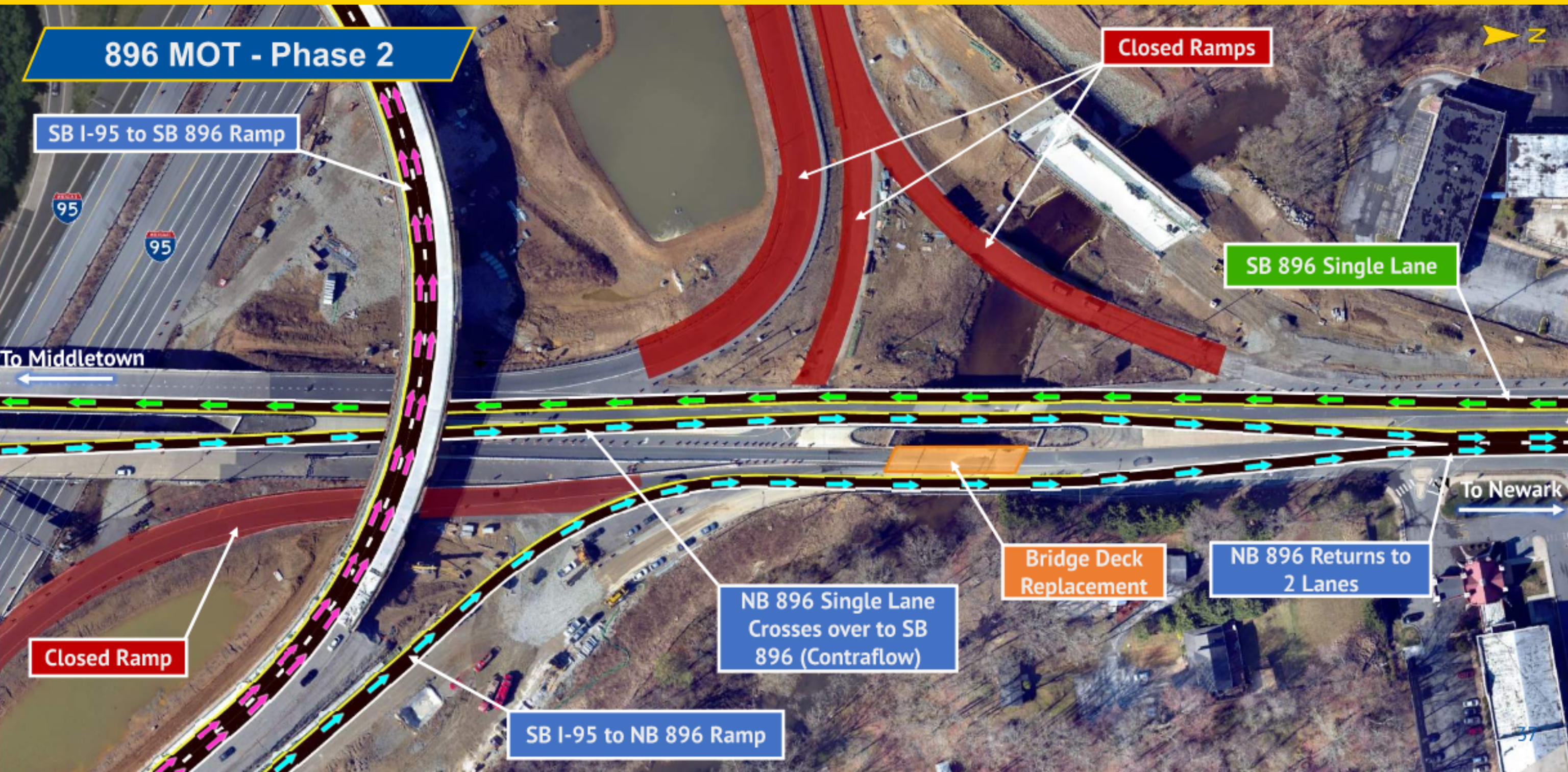


# I-95 & SR 896 INTERCHANGE PROJECT

Project Status/Ongoing Work





**896 MOT - Phase 2**

SB I-95 to SB 896 Ramp

Closed Ramps

SB 896 Single Lane

To Middletown

To Newark

Closed Ramp

Bridge Deck Replacement

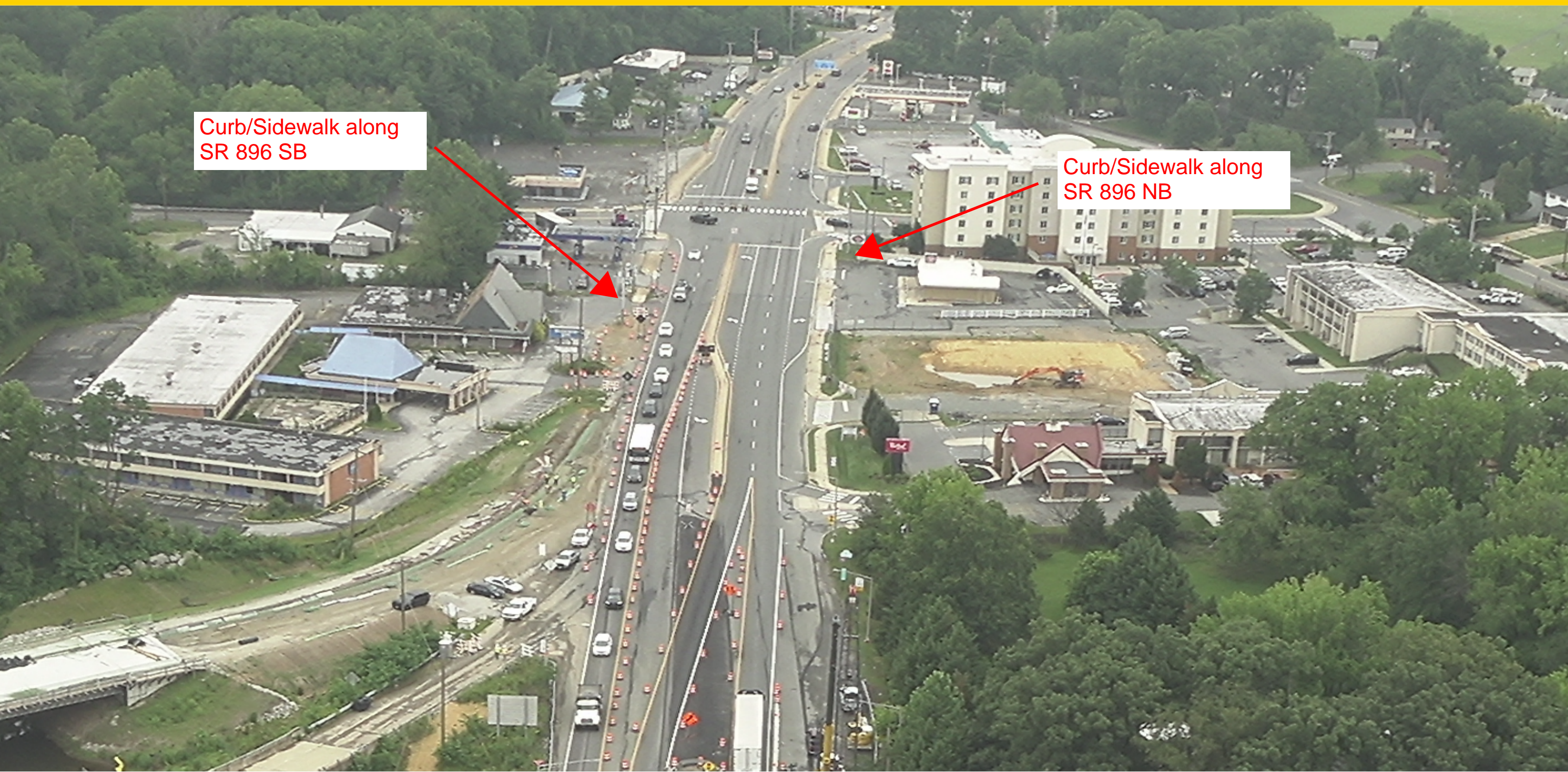
NB 896 Returns to 2 Lanes

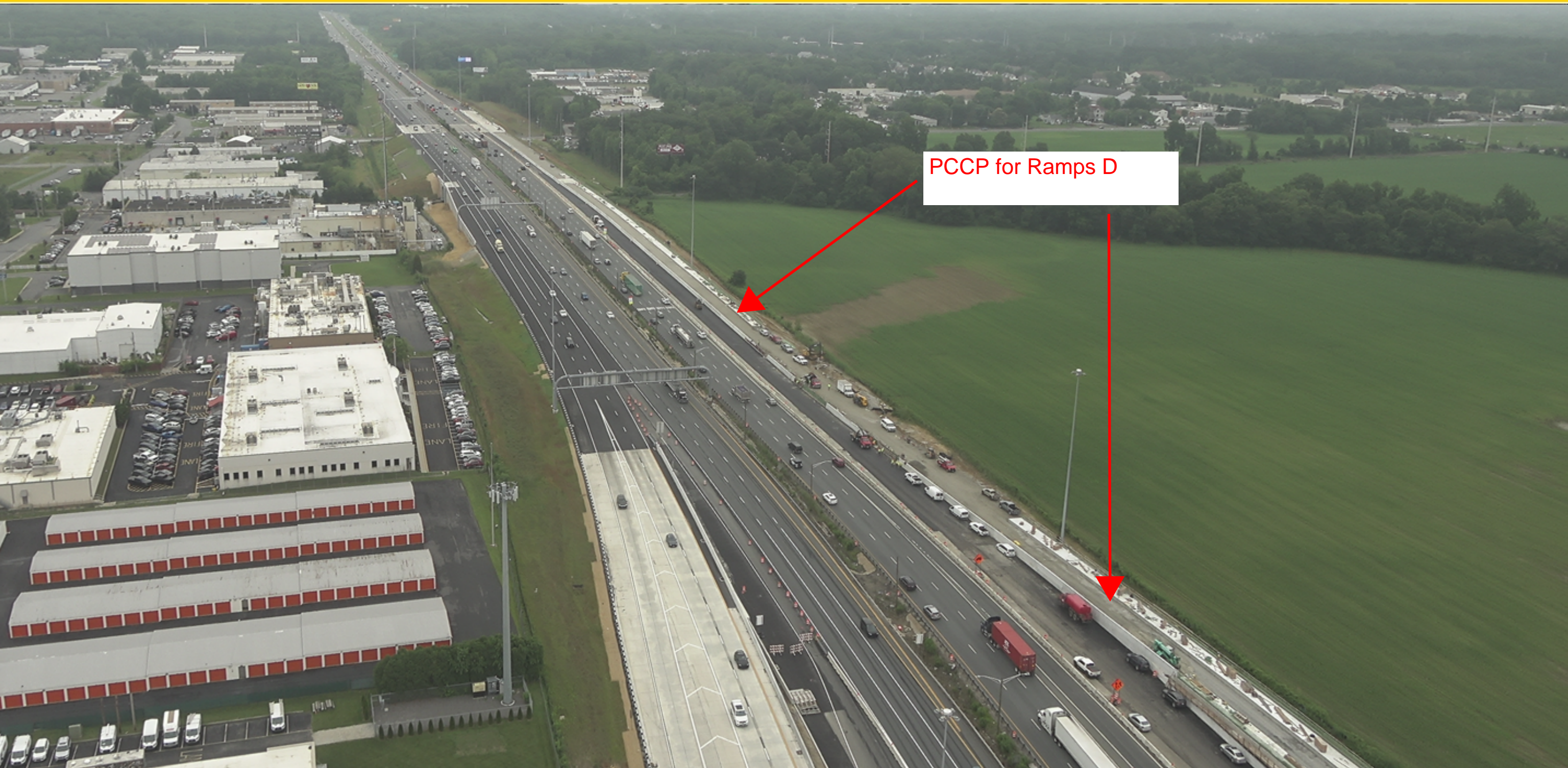
NB 896 Single Lane Crosses over to SB 896 (Contraflow)

SB I-95 to NB 896 Ramp

Curb/Sidewalk along  
SR 896 SB

Curb/Sidewalk along  
SR 896 NB





PCCP for Ramps D



Excavation/Grading  
NW quadrant

Grade along I-95  
SB



Median work  
along SR 896



Construction of  
705



New Ramp A/C



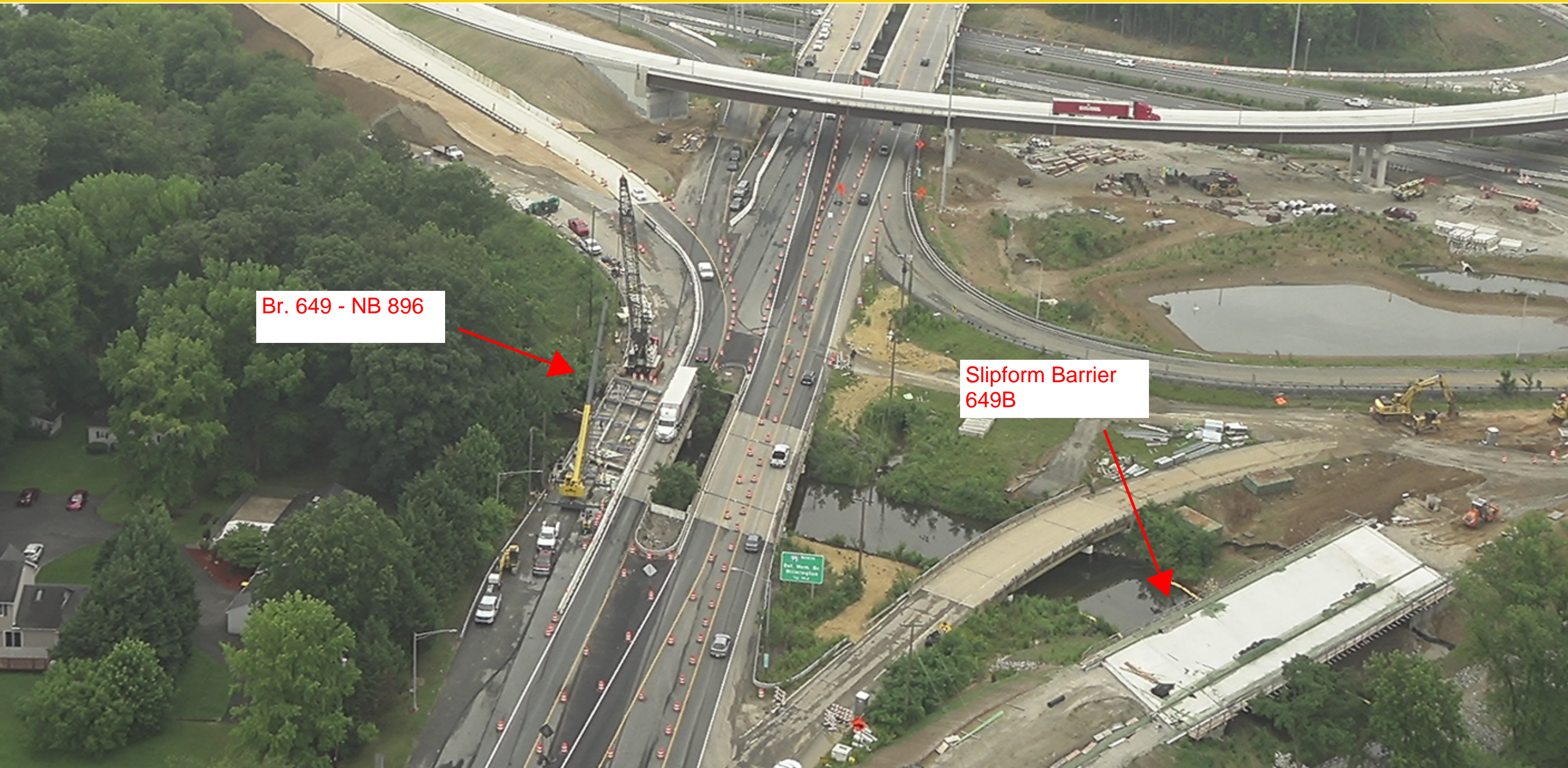
Construction of  
704





Finish Construction of Wall 1

Slipform Parapets



Br. 649 - NB 896

Slipform Barrier  
649B

