



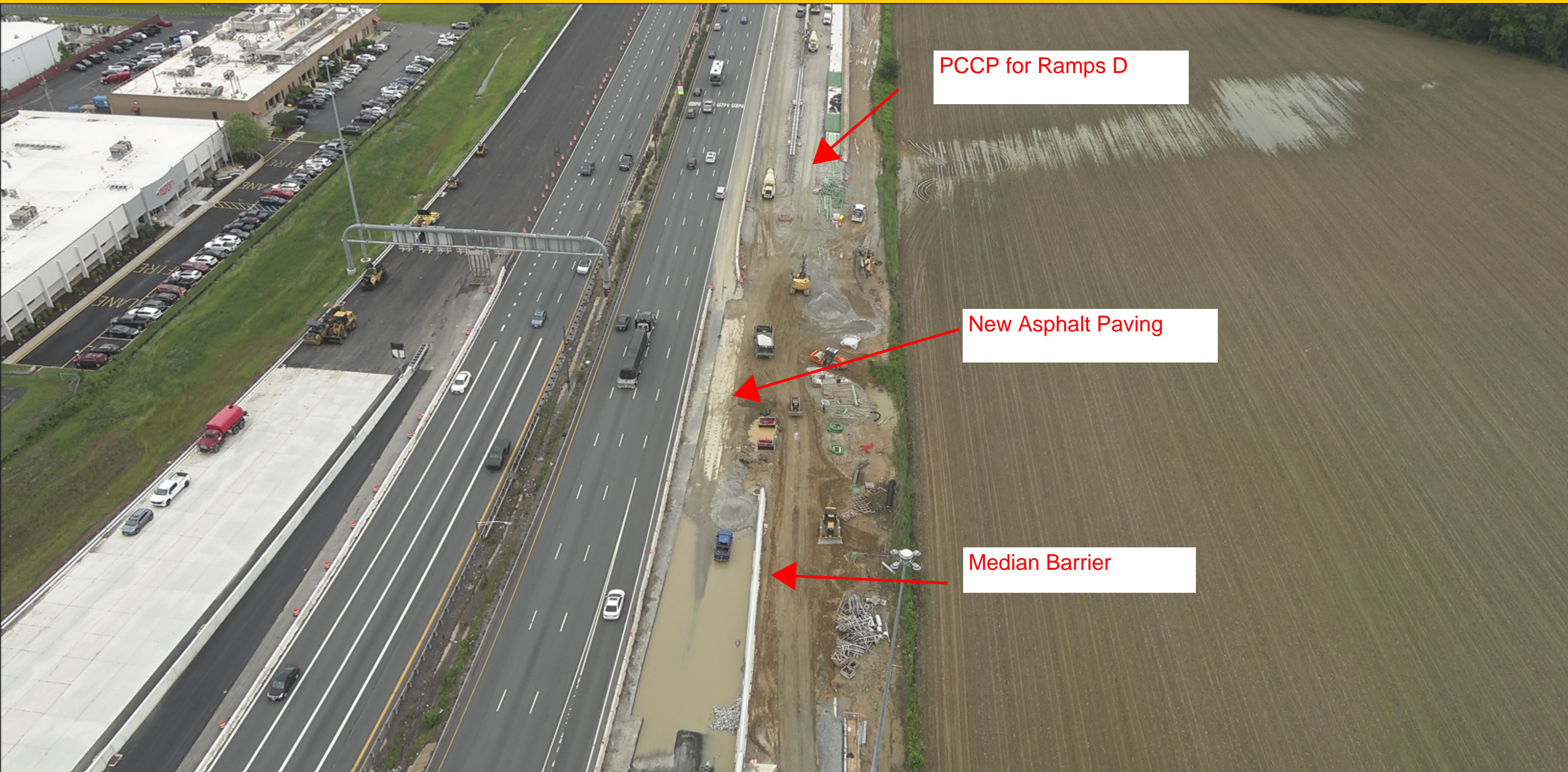
I-95 & SR 896 INTERCHANGE PROJECT

Project Status/Ongoing Work



Concrete Paving along
Ramp D

Finish Asphalt Paving



PCCP for Ramps D

New Asphalt Paving

Median Barrier



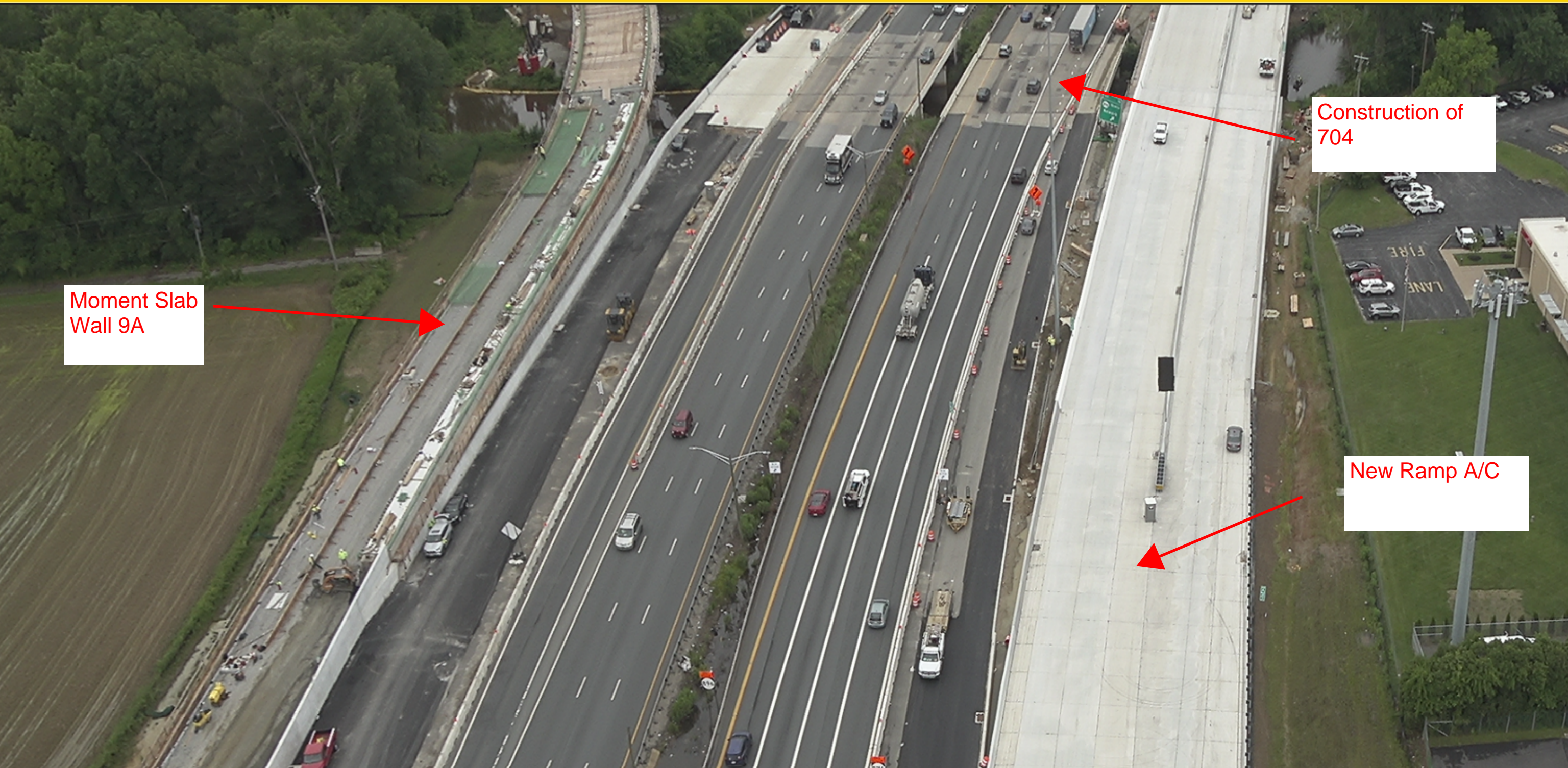
Finalize Detention Pond

Finish Slope



Median work
along SR 896

Shared Use Path



Moment Slab
Wall 9A

Construction of
704

New Ramp A/C



Finish Construction of Wall 1



Finish Approach to 649B



Start work on 649/649A



708- SB I-95

709 - NB I-95 -
Finish Barrier

I-95 & SR 896 INTERCHANGE PROJECT

SR 896 & I-95 Interchange

