

An aerial photograph of a highway interchange project. A central bridge spans across a multi-lane highway. To the left, a large interchange with a central pond is visible. The surrounding area is lush with green trees and some residential or commercial buildings in the distance. The sky is clear and bright.

I-95 & SR 896 INTERCHANGE PROJECT

Project Status/Ongoing Work



Bolt and torque beams

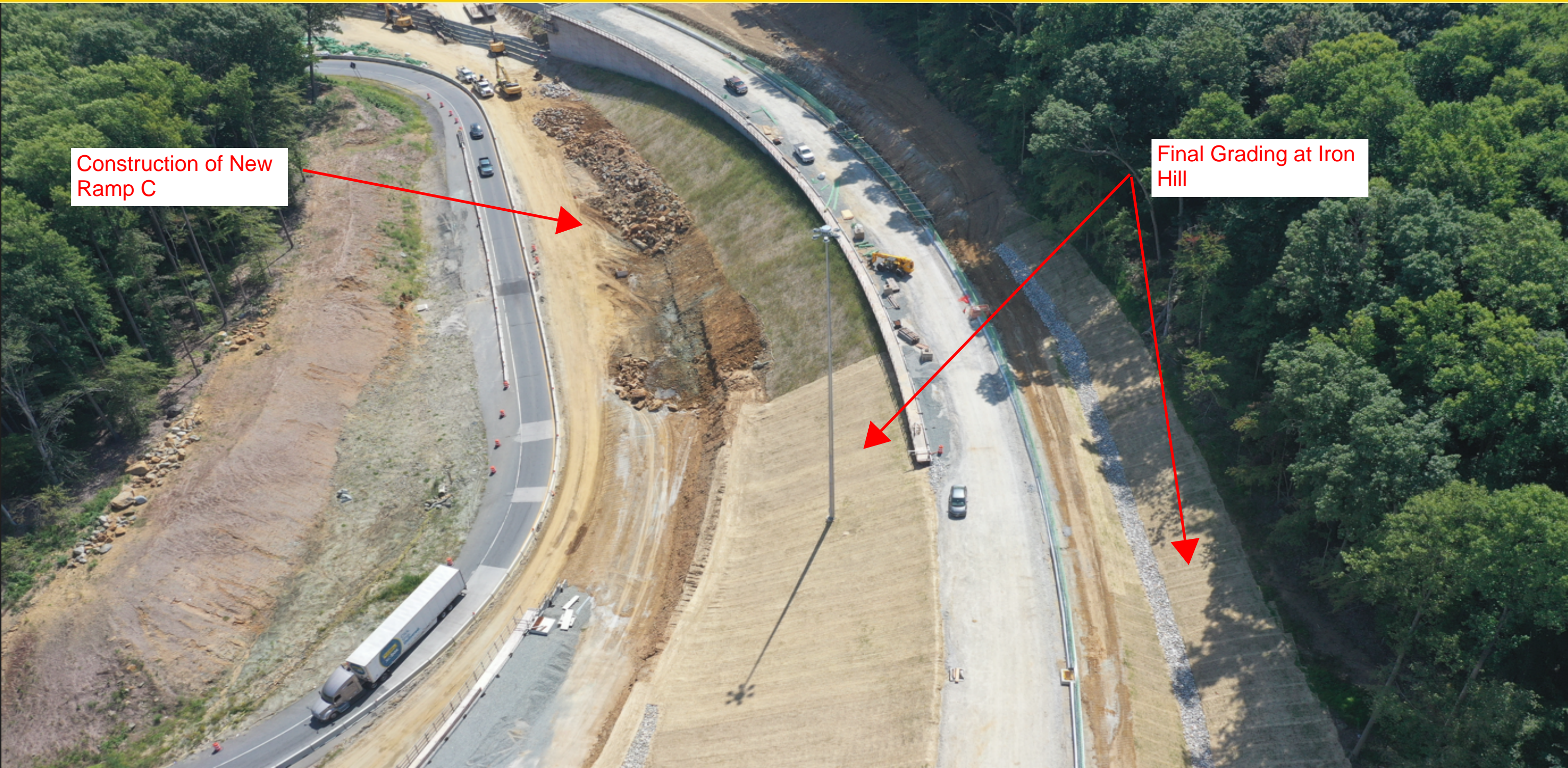
Prepare for Concrete
and Asphalt Paving

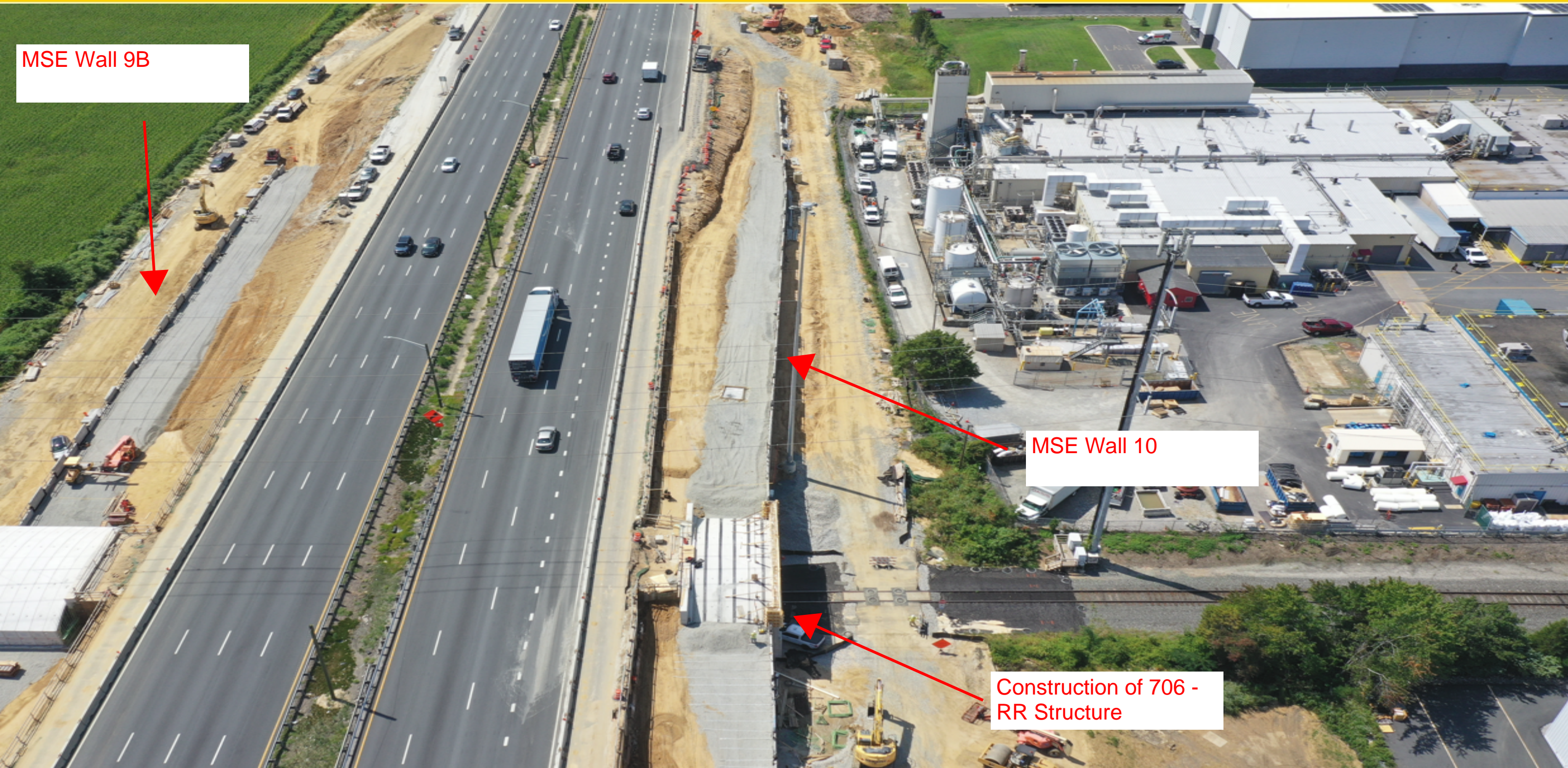
Prepare for Asphalt
Paving



Construction of New Ramp C

Final Grading at Iron Hill





MSE Wall 9B

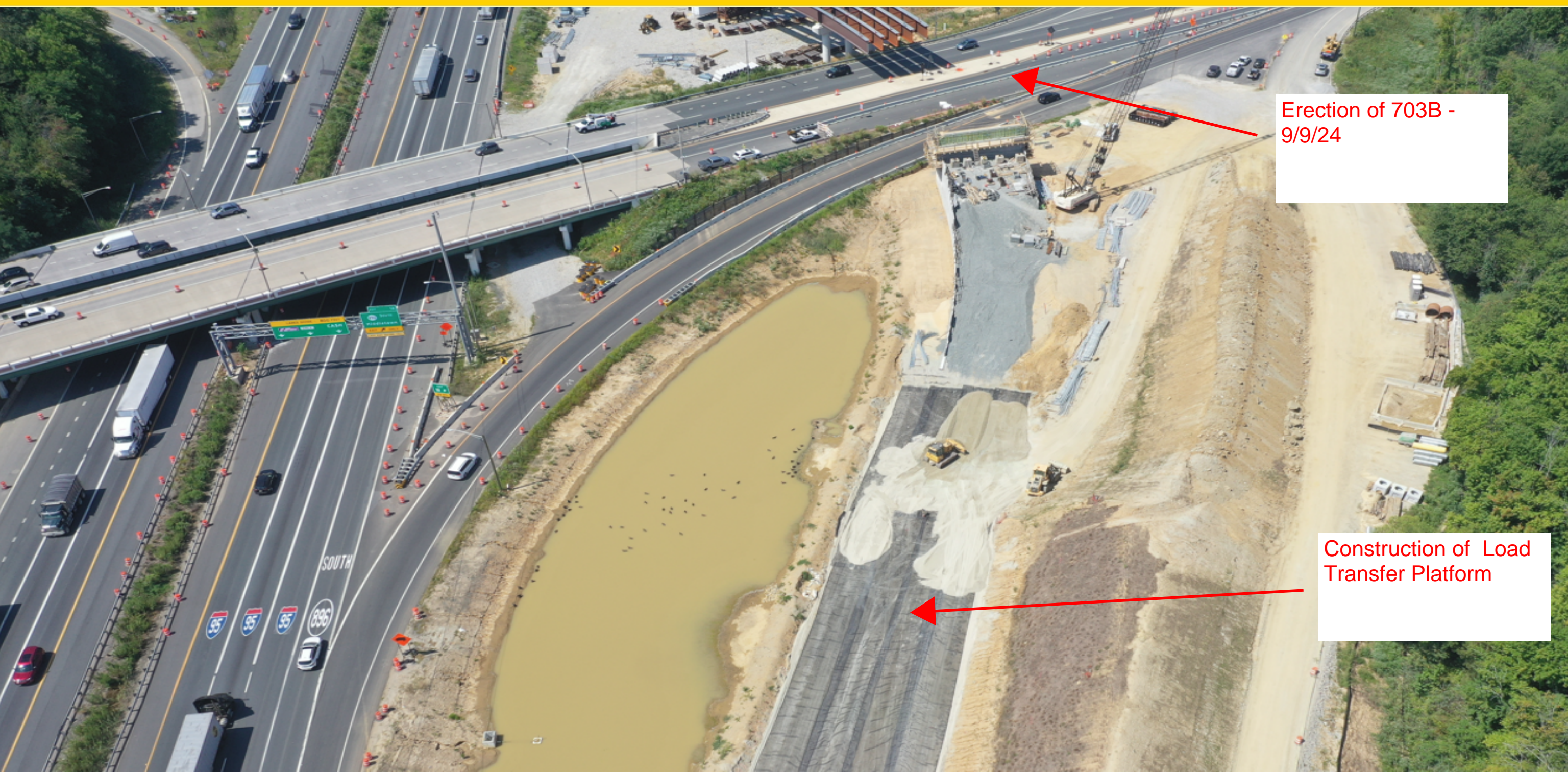
MSE Wall 10

Construction of 706 -
RR Structure



MSE Walls 8 & 9

Construction of
Moment Slabs



Erection of 703B -
9/9/24

Construction of Load
Transfer Platform



Erection of 705A
on 9/16/24

MSE Wall 14





Begin Construction of
Bridge Deck



New Steel Girders for
708 & 709